

Accessoires

Available in several colors



■ Set of polypropylene feet

cylindrical

H. 22 or 28 cm, Ø 50 mm.

Available in sets 4 + 1 feet



bleu



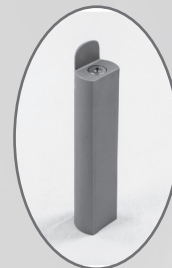
ivoire



■ Central cylindrical polypropylene adjustable foot

Height from 22 to 28 cm.

Color black



gris



noir



■ Set of 4 cylindrical wooden feet.

H. 22, Ø 55 mm.

Natural wood color.

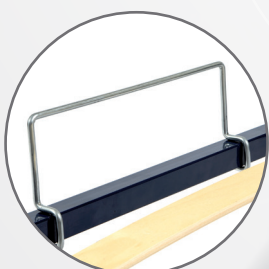
Available in set of 4 + 1 feet



■ Fixation by screws



■ Set of 2 cylindrical feet, duo frame fixation, adjustable height 22 to 28 cm, 50 mm.



■ Mattress stopper



■ Duo leg, height 31 cm. Adaptable to frame 14 and 20 slats